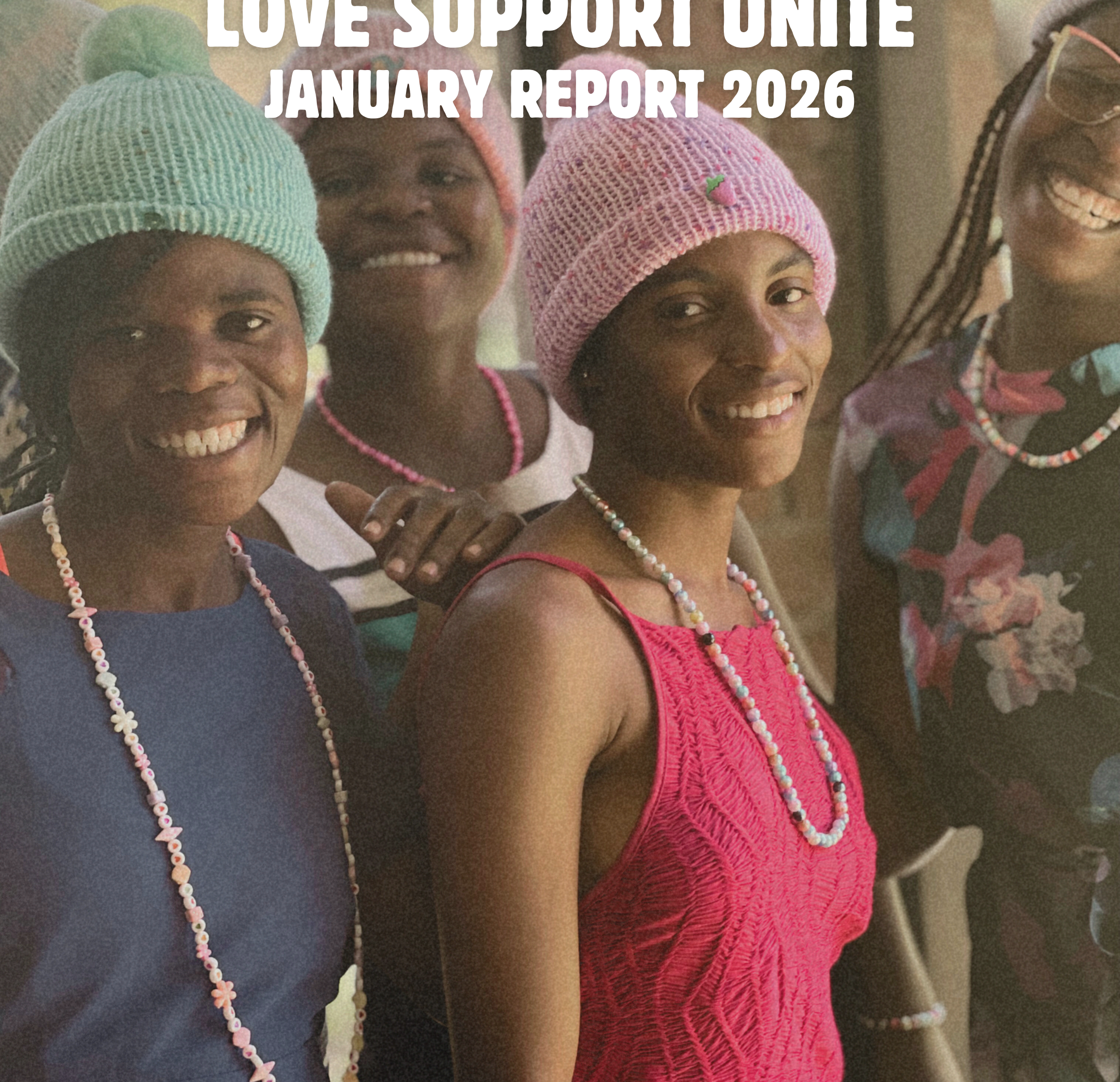




# LOVE SUPPORT UNITE JANUARY REPORT 2026



**In January, our outreach teams continued bringing essential healthcare and rehabilitation services directly to rural communities, despite funding delays that reduced clinic operations.**

**Even with fewer mobile clinics this month, care continued. Thank you for helping us keep services moving during challenging periods.**



# Medical Outreach Clinic Impact Snapshot

Despite operating only 2 Mobile Outreach Clinics this month due to funding delays, the team continued delivering essential frontline healthcare to rural communities.

---

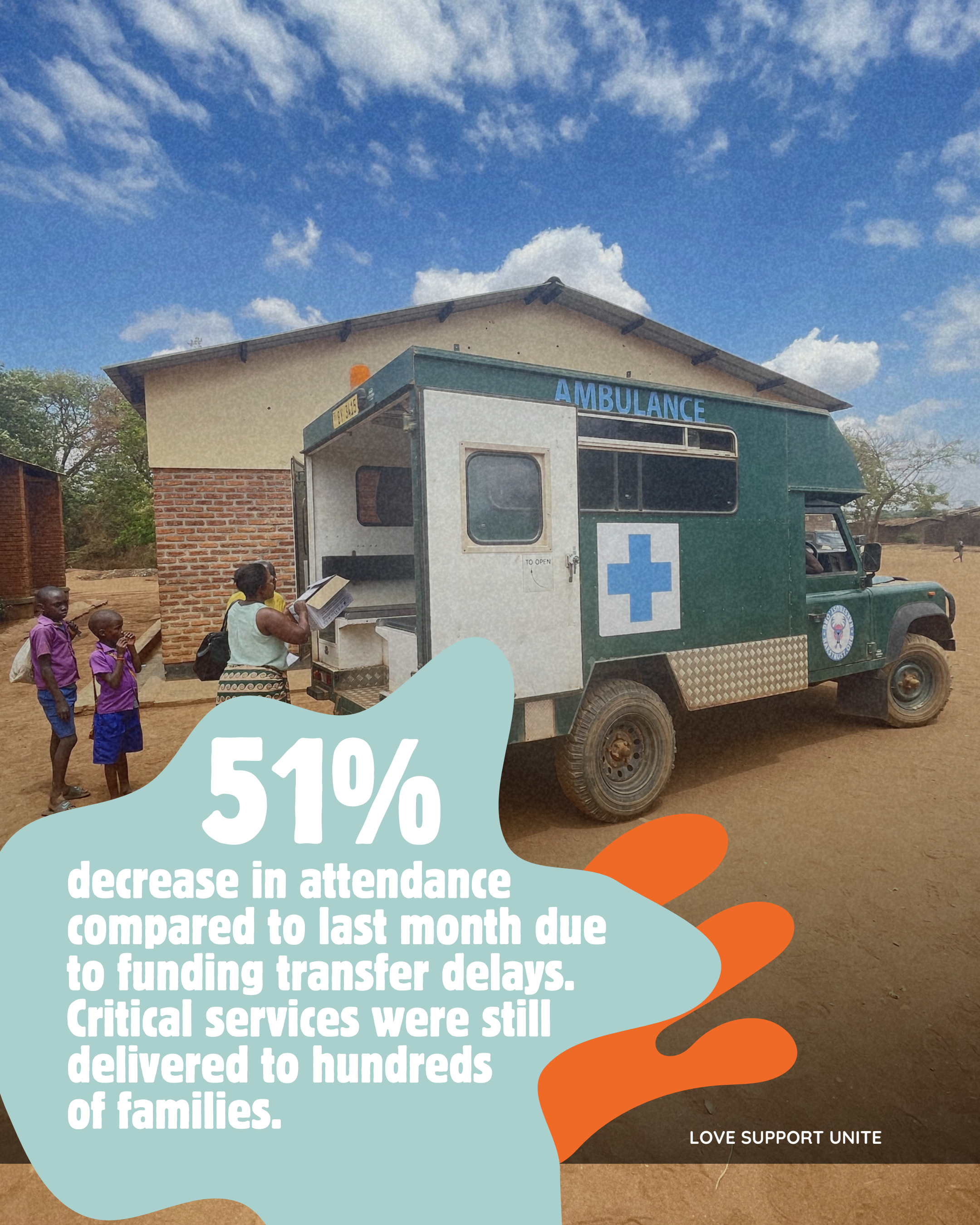
593 outpatients were treated and 334 children supported through under-5 immunisation services.

---

154 women accessed family planning services, including oral contraceptives and Depo Provera injections. 75 HIV services were delivered through counselling, testing, and self-testing options.

---

123 malaria tests were conducted, with 9 positive cases identified and treated early.



**51%**

**decrease in attendance compared to last month due to funding transfer delays. Critical services were still delivered to hundreds of families.**

# SEND Therapy highlights

**5 new children** were assessed, including **4 with cerebral palsy**.

---

**53 newborns** were assessed early (26 boys, 27 girls), with **3 cases of birth asphyxia** identified.

---

**9 children** are now sitting independently.

---

**3 children** are now crawling, and another **3 children** are progressing to standing independently.

# Challenges & Community Learning

Many families are under financial strain, increasing the risk of malnutrition for vulnerable children.

## But we are also seeing progress

guardians are growing in confidence, support groups are stronger, and community awareness is improving.

# Donor Visit

**In October 2025, LSU, Project Malawi, and African Vision Malawi visited Malawi to see the progress of the programmes supported.**

The visit also aimed to see how the transition into Gold-Youth is going. Trustee Wedzerai Chiyoka joined, meeting staff and beneficiaries across literacy, farms, ECD, and health, witnessing the impact firsthand.



# Education

Scholarship meetings connected **11 students and 14 guardians**, offering feedback, school materials, transport support, and relief funds.

---

ECD centres received **700 kg of porridge flour**, feeding children three times a week, with attendance ranging from **32 to 103** per centre.

---

All **20 partner primary schools** were visited, given stationery packs, and engaged in **UK-Malawi exchange** activities, linking children to wider learning opportunities.

# Agriculture

**From cleared fields to thriving gardens, the work this month is turning effort into real food and hands-on learning for families.**

**At Njewa, 4,445 m<sup>2</sup> of land was cleared for maize, 27 seed beds maintained, and 190 tomato seedlings planted. Perishable vegetables were grown, and 12 rabbits reared.**

---

**At Sam's Village, seasonal vegetables were planted, 3 tons of compost prepared, 4 goats reared, and 2 tons of compost harvested for the 7-acre field. Seven ECD gardens were monitored.**



# Tilinanu

**In December, 29 Tilinanu girls gathered at Sam's Village for their annual celebration.**

Many girls are advancing into university and college programmes in Education, ICT, Community Development, Nursing, and Fashion & Design. Despite challenges, the girls expressed strong gratitude and commitment to their academic goals.



## Priority Needs

Laptops for tertiary students  
(major recurring need)

Application fees for  
college entrants

Nursing equipment

School uniforms,  
shoes and textbooks

Support for education trips



# Gold Youth Scholarship Camp

**From 27–30 December,  
the 2025 Scholarship Camp  
was held at Sam's Village**

74 scholarship students attended the camp:  
29 from Tilinanu, 33 from African Vision  
Malawi, and 12 from LSU.

The camp covered topics like personal responsibility and financial literacy. Each student also received essential household supplies and MK40,000 (about £17), support many described as vital because of food insecurity at home.

**Thank you for helping us keep  
outreach running, therapy  
progressing, and young  
people supported.**

**January showed real resilience,  
and in the coming month we will  
focus on restoring full clinic  
operations, strengthening  
community-based rehabilitation,  
and continuing to support  
families across Malawi.**

**THANK YOU!**